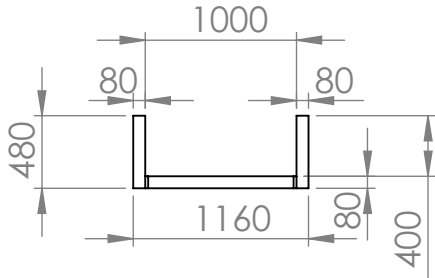
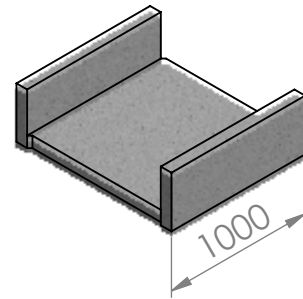
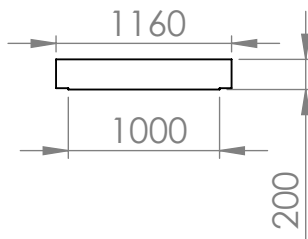
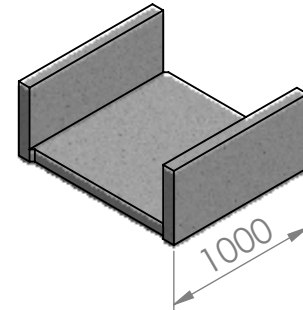


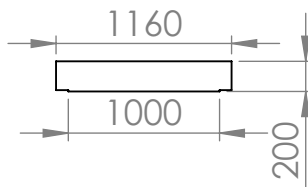
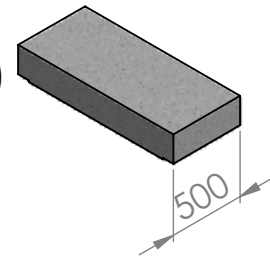
Kineta 100x30x100  
teža: 285 kg



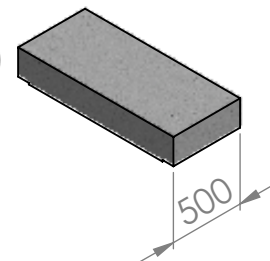
Kineta 100x40x100  
teža: 380 kg



Pokrov za kineto 100 (250 kN)  
teža: 278 kg



Pokrov za kineto 100 (400 kN)  
teža: 278 kg



NAVODILA ZA VGRADNJO:

Kinete so primerni za vgradnjo v suho gradbeno jamo, katera je bila predhodno utrjena z drobljencem, gramozom ali podložnim betonom. Po namestitvi, kineto enakomerno zasujemo iz vseh strani. Sloje nasutega materiala sproti utrdimo.



TITLE:

KINETE IN POKROVI ZA KINETO  
100

DWG NO.

KINETE IN POKROVI KINETA 100

A4

MATERIAL: ARMIRANI BETON

TEŽA: