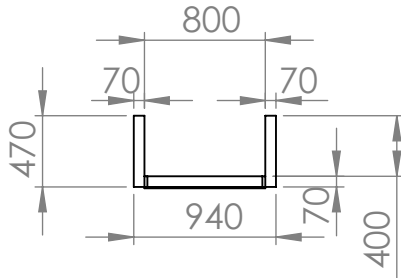
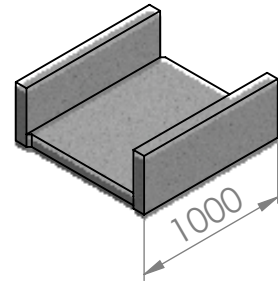
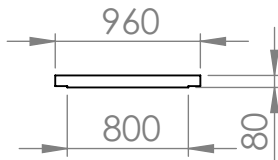
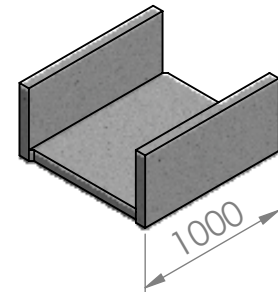


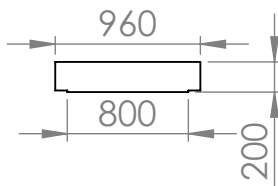
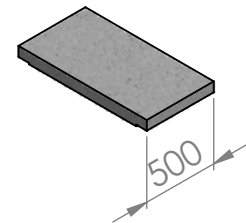
Kineta 80x30x100  
teža: 215 kg



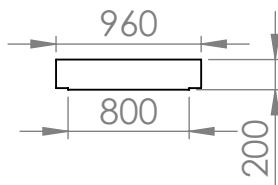
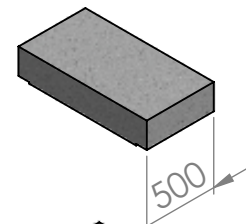
Kineta 80x40x100  
teža: 285 kg



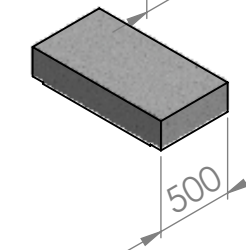
Pokrov za kineto 80 (125 kN)  
teža: 90 kg



Pokrov za kineto 80 (250 kN)  
teža: 230 kg



Pokrov za kineto 80 (400 kN)  
teža: 230 kg



NAVODILA ZA VGRADNJO:

Kinete so primerni za vgradnjo v suho gradbeno jamo, katera je bila predhodno utrjena z drobljencem, gramozom ali podložnim betonom. Po namestitvi, kineto enakomerno zasujemo iz vseh strani. Sloje nasutega materiala sproti utrdimo.



TITLE:

KINETE IN POKROVI ZA KINETO  
80

DWG NO.

KINETE IN POKROVI KINETA 80

A4

MATERIAL: ARMIRANI BETON

TEŽA: